

Mechanical Connectors

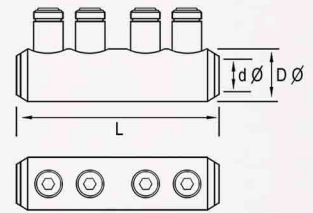
Sicon Shear-Bolt Connectors

- Wide application range for each connector
- Can be used on copper or aluminium conductors up to 36kV
- Manufactured from aluminium alloy
- Reduces installation time, no need for crimp tools



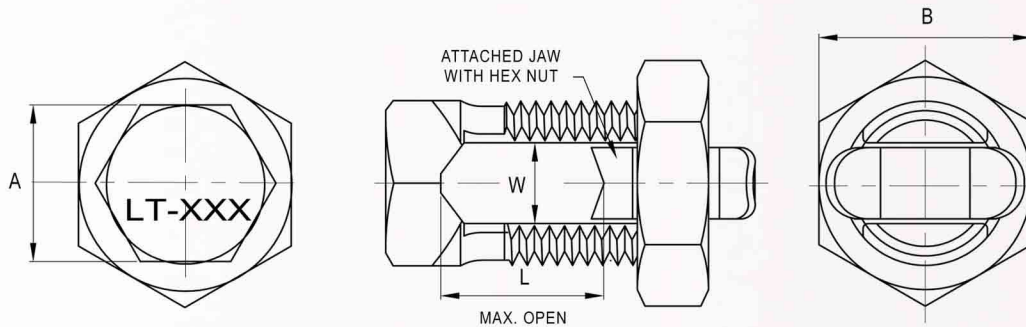
Shear Bolt Splices Connectors

Part No.	Dimensions mm			No. of Screws	Round (mm ²)	Round and Compacted (mm ²)	Solid Alum. & Copper Cond. (mm ²)	Hexagon key
	D ϕ / d ϕ / L							
SBS10-95	24	13	65	2	10-95	10-95	10-70	4mm-3/16"
SBS50-240	33	20	126	4	50-185	50-240	50-185	6mm-1/4"
SBS95-300	38	24	140	4	95-300	95-300	95-240	8mm-5/16"



Line Taps

Material: Brass BS2874 - CZ112
Finish: Nickel plated



Part No.	Conductor Range		Dimensions mm			
	Min (mm ²)	Max (mm ²)	Body A/F A	Nut A/F B	Width W	Length L
LT10	10	16	12.0	16.0	5.5	8.5
LT16	16	25	14.0	18.0	6.9	9.0
LT25	25	35	15.0	20.0	8.4	11.0
LT35	35	50	18.0	24.0	9.7	12.0
LT50	50	70	20.0	25.0	11.2	14.0
LT70	70	95	22.0	28.0	13.6	18.0
LT95	95	120	25.0	33.0	16.0	24.0
LT120	120	150	28.0	36.0	19.0	30.0